

withthegrid

Smart Energy Day: Cybersecurity

Observations, actions and trends from a Smart Energy Gateway developer

Arnhem, 10 October 2024

Table of contents

**with
the
grid**

Withthegrid

01



The Teleport

02



**Observations, actions
and trends**

03

Building steadily since 2016

2 solutions

- Asset Monitoring Platform
- Teleport Gateway

Reliable & secure

- 99,9% availability
- ISO27001 certified

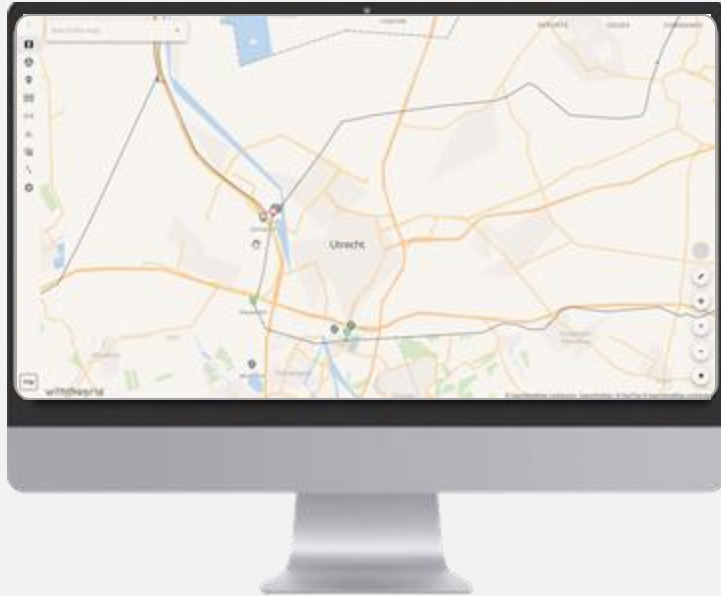
Part of critical infrastructure

- Netherlands, Belgium, Spain, Germany
- Grid operators, Asset owners, Energy traders

Our track record now

- Unlocking 1GW of flexibility with the Teleport
- Monitoring 10 000KM of cables and pipelines with the AMP

Our solutions



For grid operators (TSO, DSO): **Asset Monitoring Platform**

- Bring assets online with IoT
- Monitor critical infrastructure



Cable oil pressure
(200 devices)



Cathodic protection
(11k devices)



6 IoT use cases
(2k devices)

Table of contents



Withthegrid

01



The Teleport

02



**Observations, actions
and trends**

03



The Teleport

What is the Teleport?

- The Teleport is a gateway designed to enhance the flexibility and profitability of energy assets.
- It connects the assets securely to the cloud and allows real-time remote control via one single API.



Solar panels



Wind turbines



Batteries



Meters

250+
asset types

Use cases

Maximizing value of your assets



1. Solar curtailment
(imbalance / aFRR)



2. Wind curtailment
(imbalance / aFRR)



3. Battery trading
(Utility scale, C&I, Mobile batteries)



4. On-site EMS



5. Dynamic load management



6. Cable pooling



7. Realtime interface



8. Energy hubs



9. Your use case?

The Teleport

Simplify connectivity, protect your grid connection



The Teleport

Simplify connectivity, protect your grid connection



Table of contents



Withthegrid

01




The Teleport


02



**Observations, actions
and trends**

03

1. From demand drive to supply driven
 2. Centralized to decentralized
 3. Predictable to unpredictable
- 

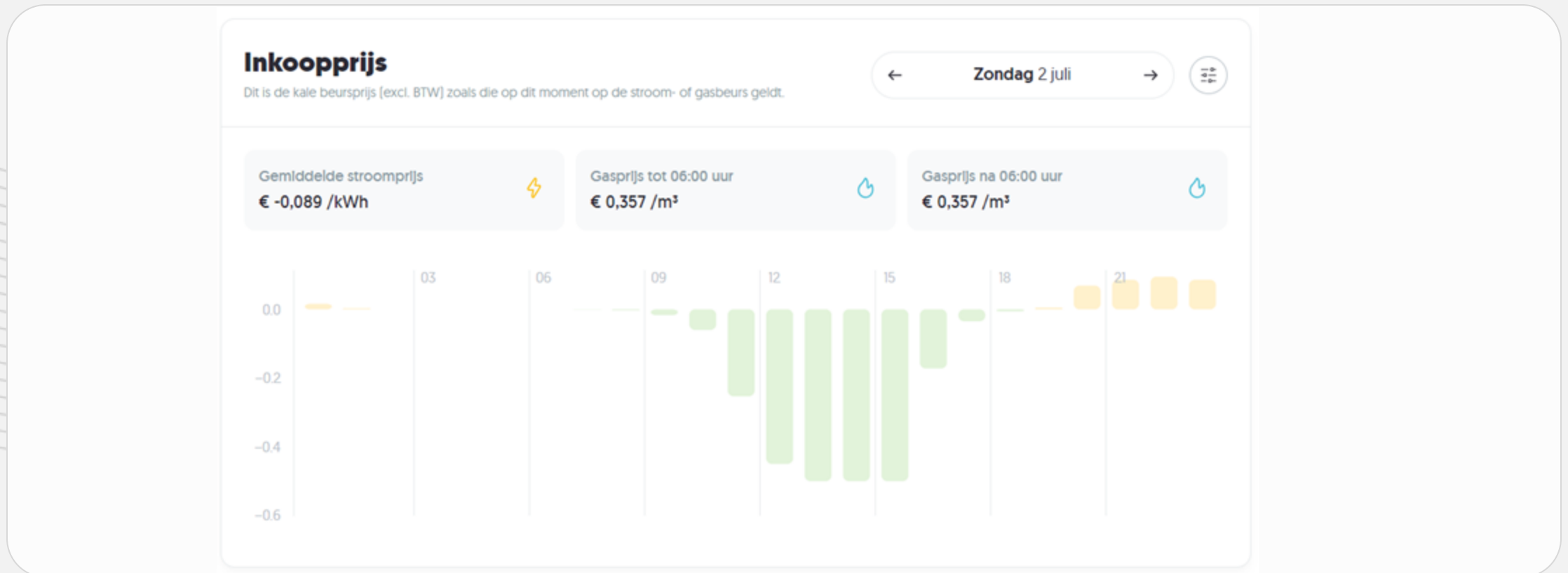
- **Continuous forecasting**
 - **Continuous matching of supply and demand**
 - **Continuous steering / asset control**
- 

Controlling assets is the name of the game

1. Negative hourly prices (Day-ahead EPEX)
2. Imbalance (*Curtailment*)
3. Congestion
4. Real-time Interface
5. Local Control

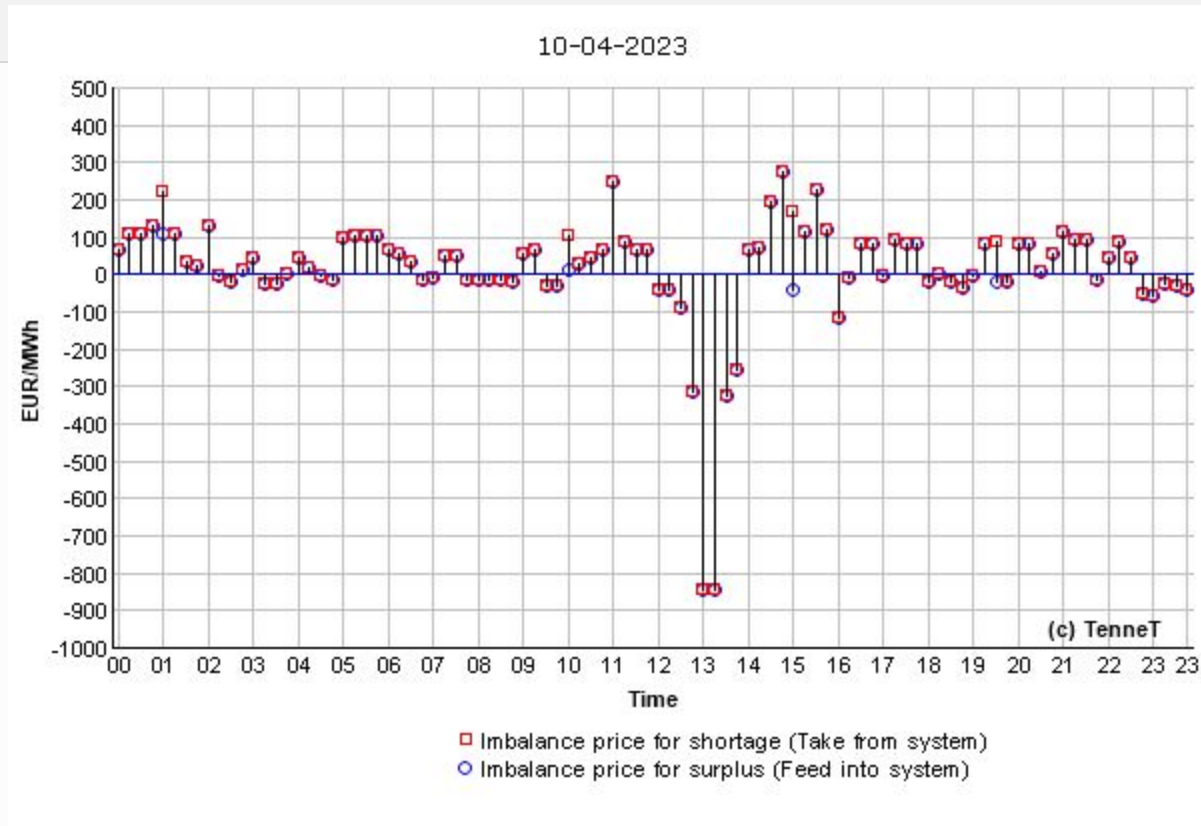
Types of Control

Day-ahead price



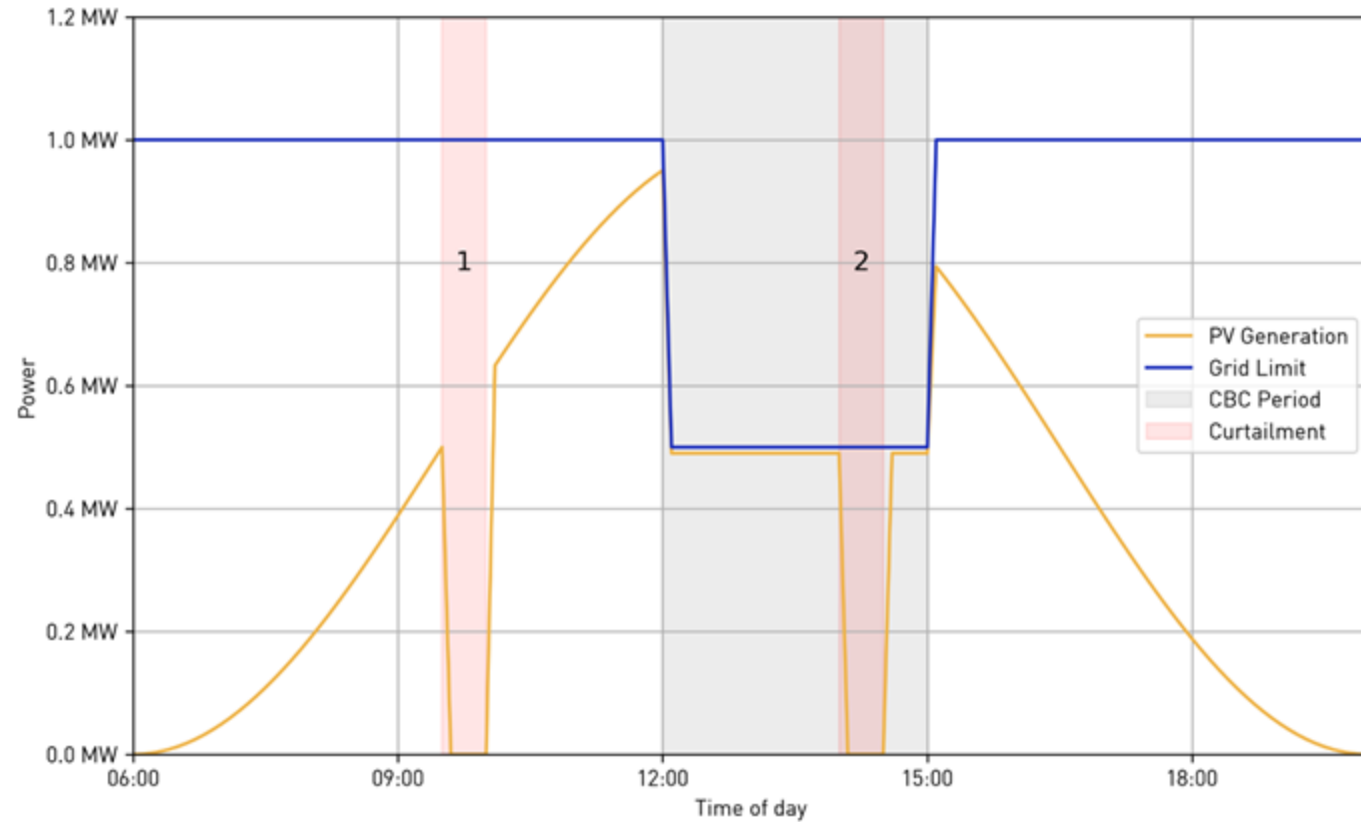
Types of Control

Imbalance



Types of Control

Grid congestion



Types of Control

Real-time Interface

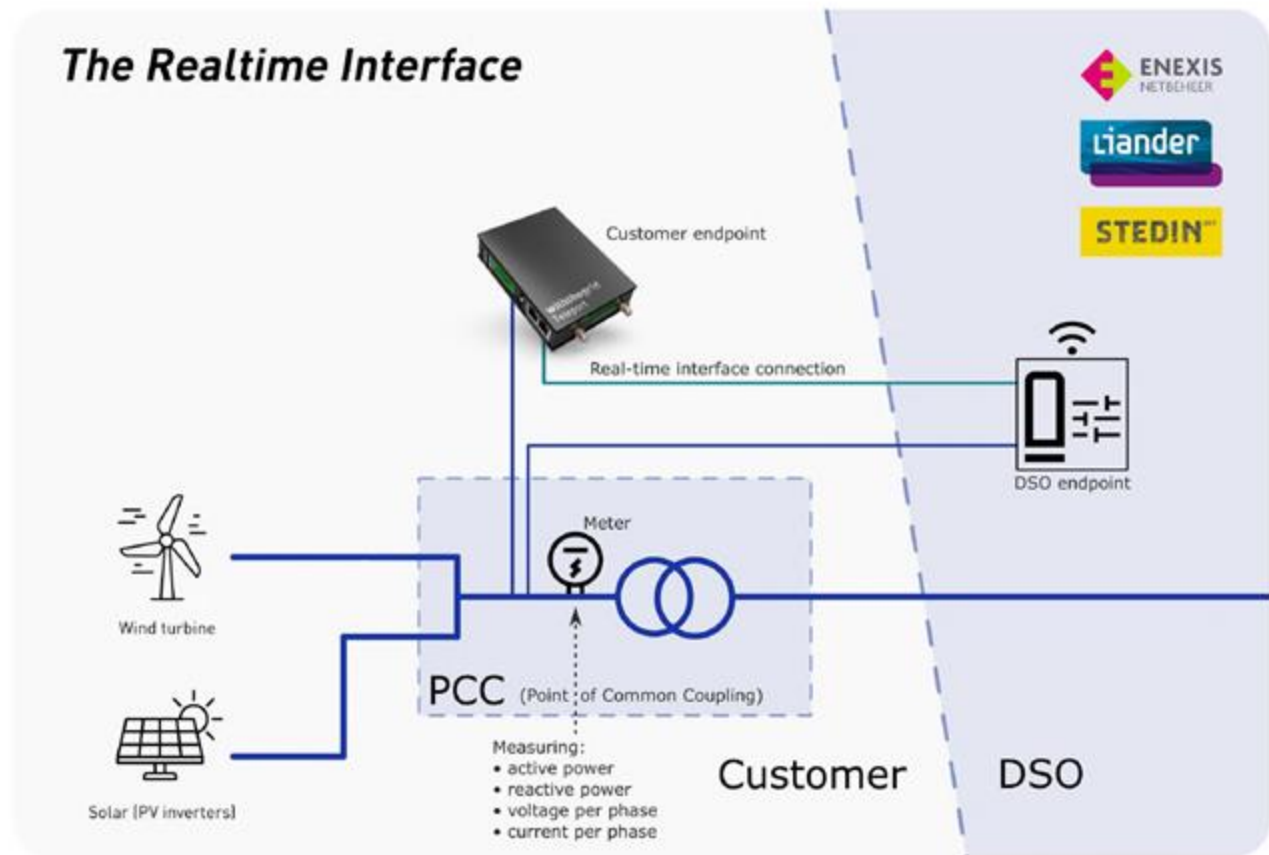


Figure 2: Realtime Interface setup diagram

Types of Control

Local control (dynamic feed-in)

Solar system
(1 MW)

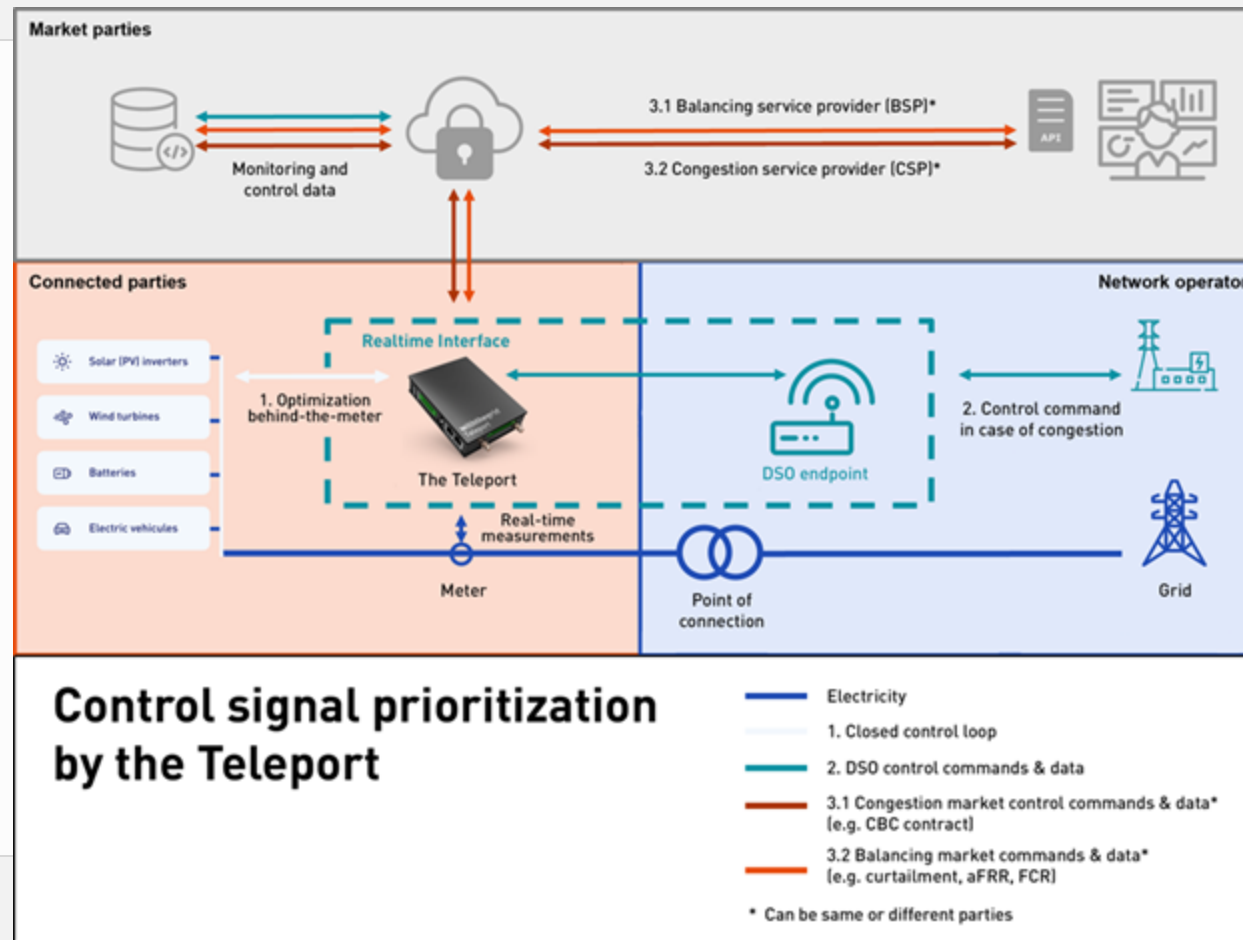
Factory
(500kW)



Grid connection
(500kW)

Types of Control

All steering combined




1. Industry sectors (Solar)

2. Grid operators

3. EU



1. Controllability separate role
 2. Certification on company level
 3. Official role (e.g. Dutch metering role)
 4. Auditability
- 

withthegrid

Questions?



Paul Mignot

Co-Founder & CEO

+31 6 26 414 492

paul@withthegrid.com